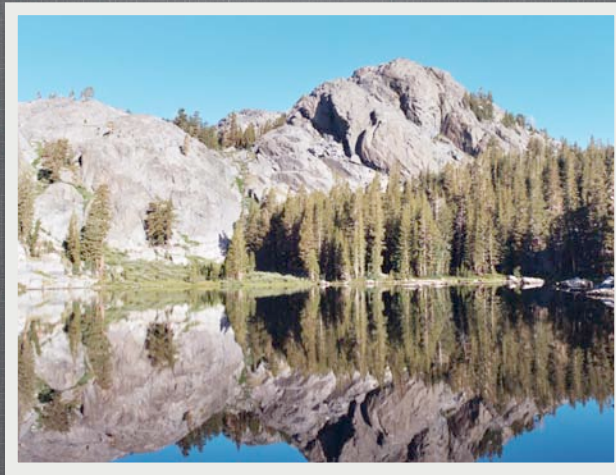


Common Ground

Consensus and a Sense of Place in the Eastern Sierra



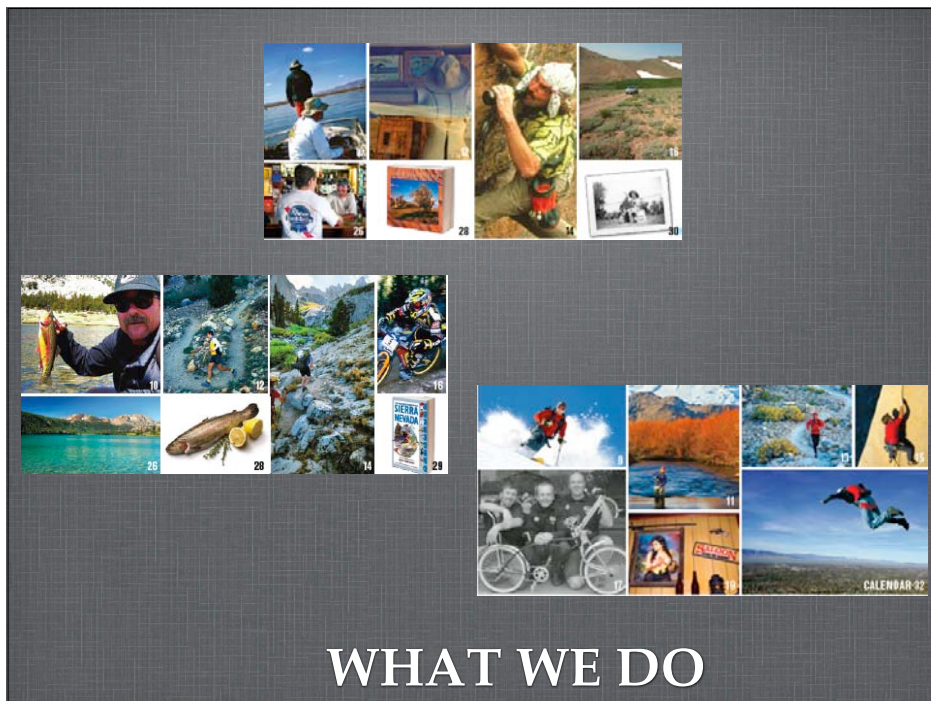
WHERE WE ARE

- Wild side of CA
- Millions of acres of public land (BLM, USFS, NPS)
- Contrasts: highest mountain, deepest valley
- Beloved destination--sentimental ownership



WHO WE ARE

- By, for and about...
- “We’re for living the best live possible--whether for a few days or decades--in the Eastern Sierra”
- Authentic, adventurous, engaging, curious, not always serious




WHAT WE DO

WHERE WE ARE




WHO WE ARE

THINK YOU
MAKE GREAT
TURNS? YOU
SHOULD SEE
MINE



OUR PUBLIC LANDS:
Let's make room for
turns of all kinds

EASTERN SIERRA STEWARDSHIP CENTER

FRIENDS OF THE INYO
PRESERVATION • EXPLORATION • STEWARDSHIP

WORKING
TOGETHER



**FOR OUR
BACKYARD**

EASTERN SIERRA STEWARDSHIP CENTER

FRIENDS OF THE INYO
PRESERVATION • EXPLORATION • STEWARDSHIP
760.873.6500
Central Valley Chapter

YOURS
MINE
AND
THEIRS



OUR PUBLIC LANDS:
It's a Family Affair

EASTERN SIERRA STEWARDSHIP CENTER

FRIENDS OF THE INYO
PRESERVATION • EXPLORATION • STEWARDSHIP
760.873.6500

WHAT WE DO



COMMON GROUND