



Stewardship Contracting

Pacific Southwest Region

Stewardship Contracting

- Stewardship contracting is helping the Forest Service and BLM improve forest health & restoration by providing a tool for vegetative treatment & fuel reduction
- Collaboration with local & rural communities, & Tribes is integral to agency success in stewardship contracting

What have we accomplished?

- FY' 03 – FY' 08
 - Awarded 47 contracts for 34 plus thousand acres
 - Total of 128 MMBF of products with an estimated value of \$10,500,000
- FY'07 – FY' 08
 - Total of approximately 16,000 thousand acres
 - Total of 62 MMBF or 17% of total award, estimated value: \$6,100,000
 - Awarded 17 contracts (FY07)
 - 3 Agreements (RMEF, Watershed Research and Training Center)
 - Weaverville Community Forest (Forest Service, BLM, Trinity Resource Conservation District)

Regional Overview

Forest	Proposals	Contracts	Forest	Proposals	Contracts
Angeles	0	0	Six Rivers	2	2
Cleveland	0	0	Plumas	7	6
Eldorado	23	20	San Bernardino	0	0
Inyo	1	1	Sequoia	0	0
Klamath	3	1	Shasta-Trinity	3	3
Lassen	2	0	Sierra	1	1
Los Padres	0	0	Stanislaus	4	5
Mendocino	3	3	Tahoe	7	2
Modoc	3	1	LTBMU	0	0
Sum				59	47

Stewardship Tools

- Integrated Resource Contracts - Products
 - Timber value equals or exceeds costs of service work
 - Patterned after 2400-6(T) Timber Sale Contracts
- Integrated Resource Service Contracts
 - Service contracts that includes product removal
 - Service cost exceeds timber value
- Agreements – Challenge Cost Share, Participating and Wyden Agreements

What are we using stewardship contracting for?

- Removing vegetation for forest health or fuel reduction
- Road obliteration to restore or maintain water quality
- Watershed restoration and maintenance
- Restoration of wildlife and fish habitat
- Control noxious weeds



Fuel Reduction Wildland Urban Interface

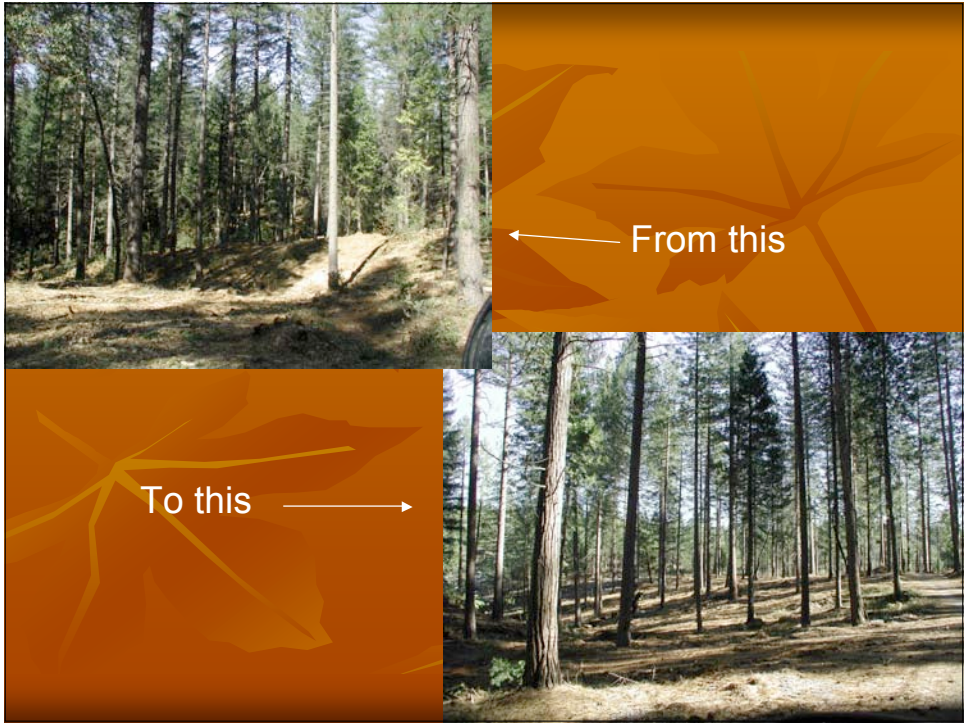


Why Stewardship contracts??

Fuel?? What fuel??



*We have a fuel problem; We have a density problem
Commercial thinning provides the value needed to treat ladder and surface fuels and improve forest health*



Stewardship Agreements



Shasta-Trinity National Forest,
McCloud Flats

10-Year Agreement

Stewardship Area: 33,700
acres

Wildlife Improvement projects,
emphasizing elk



Most common Product
–sawlogs

Forest Products - Forage

Brazil Ranch
Monterey Ranger District
Los Padres National Forest

Attachment C – Area Map



Bixby Bridge with Brazil Ranch in background. Buildings are not visible for State Highway One

Forest Products – Christmas Trees



- Tahoe National Forest
- Nickel Stewardship Project-44 Acres
- Fuels Reduction-WUI
- Product-Christmas Trees

Stewardship Contracting Benefits

- Preparing and Administering One Contract instead of multiple contracts
- Completing the project in less time
- Performing more service work
- Reducing unit costs for service work
- Reducing potential adverse environmental impacts.



- Can meet fuels objectives cheaper and sooner than conventional sales using one contract
- Can get more acres done - not relying on appropriated \$ for contracts except for salaries; 100% of timber value available on the ground - no overhead tap

Stewardship Contracting References

- <http://www.fs.fed.us/forestmanagement/projects/stewardship/index.shtml>
- http://www.blm.gov/nhp/spotlight/forest_initiative/stewardship_contracting/
- <http://www.partnershipresourcecenter.org/resources/imp-tools/stewardship/index.php>
- <http://rlch.org/>
- <http://forestfire.nau.edu/stewardship.htm>
- <http://www.pinchot.org/>
- <http://www.forestsandrangelands.gov/stewardship/index.shtml>